

Low-cost JTAG Debugger “Catapult EJ-2™ for Xilinx” Supports the Xilinx® FPGA Series chips

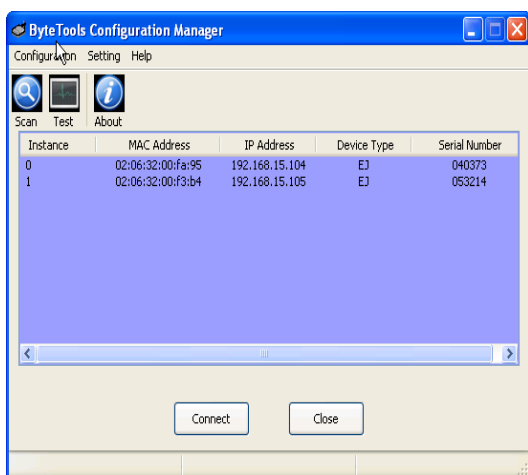


Connection & Setup



Features & Advantages :

- Remote Debugging for Xilinx FPGAs.
- Standard Ethernet/IP interface.
- Supports DHCP & static IP
 - DHCP by default
- Configuration Utility S/W that simplifies connection.
- ChipScope and CSE plug-in V14.1.
- Other Feature/Advantage...1.
- Other Feature/Advantage...2.
- Quick Startup Guide.
- Windows and Linux Host PC environments supported.



FPGA Support	Xilinx® Xilinx™ Processor Series: xx1, xx2, xx3, xx4, xx5, xx6, etc.
OS Support	Windows XP, Windows 7 (32/64), Windows 8 (32/64), Linux 32/64

※ All other product and company names are their own trademarks. Specifications are subject to change without notice.

Ver.1.10 FO_BT120829E

COMPANY

Flatoak Co., Ltd.
402 Fuji Bldg-88, Machida, Tokyo, 194-0013
TEL +81-42-710-5161 FAX +81-42-710-5162
<http://www.flatoak.com>



DIST.

